



【Press Release】

For Immediate Release

**Jockey Club "Brain Health" Dementia Screening and Community Support Project
Building Primary Healthcare Services for Dementia**

Data analysis from "EC Screen" app shows that 30% of participants need further cognitive assessment

Age and low educational attainment are key risk factors in cognitive impairment

(15 September, 2024, Hong Kong) As people age, they may experience memory loss, raising concerns about the onset of dementia. Currently, there is a lack of preventive information and diagnostic services for dementia at the primary healthcare and community level. This gap causes many individuals with suspected early-stage dementia to miss opportunities for prevention, diagnosis, intervention, and support. The Jockey Club "Brain Health" Dementia Screening and Community Support Project, funded by The Hong Kong Jockey Club Charities Trust with donation of over HK\$170 million, is organized by the Jockey Club Centre for Positive Ageing (JCCPA) and the Faculty of Medicine of The Chinese University of Hong Kong with seven partner organizations, including Christian Family Service Centre, Haven of Hope Christian Service, The Lok Sin Tong Benevolent Society, Kowloon, Pok Oi Hospital, St. James' Settlement, Tung Wah Group of Hospitals and Yan Chai Hospital Social Services Department. The project provides support services to elderly individuals in need and their families from December 2023 to November 2026. It aims for 'early detection, early diagnosis, and early intervention.' Through medical-social collaboration, the project assists individuals suspected of having dementia in receiving diagnosis and support at the primary healthcare and community level.

Mr. Chris Sun, JP, Secretary for Labour and Welfare; Dr. the Honourable Lam Ching-choi, SBS, JP, Chairman of the Advisory Committee on Mental Health; Mr. Eddie Lee, JP, Deputy Secretary for Health; Ms. Imelda Chan, Head of Charities (Positive Ageing & Elderly Care; and Healthy Community), The Hong Kong Jockey Club; Dr. Maria Tang, Deputising Hospital Chief Executive, Shatin Hospital, Hospital Authority, and Professor Timothy Kwok, Director of JCCPA and S.H. Ho Professor of Geriatric Medicine of Department of Medicine and Therapeutics, representatives from partner and supporting organizations, and some of the participating in the project private doctors attended the launch ceremony of the Jockey Club "Brain Health" Dementia Screening and Community Support Project held at New Town Plaza in Sha Tin today (15 September).

Mr. Chris Sun, JP, Secretary for Labour and Welfare stated that population aging is an irreversible trend, the number of people with dementia will also increase as the elderly population continues to grow. He is pleased to see that The Hong Kong Jockey Club Charities Trust is funding the Jockey Club 'Brain Health' Dementia Screening and Community Support Project, organized by the Jockey Club Centre for Positive Ageing and the Faculty of Medicine of The Chinese University of Hong Kong, in collaboration with seven co-organizers. This project promotes dementia prevention at the primary healthcare level and provides support to the public, ensuring that every participant and their caregivers receive appropriate services.

主辦機構



賽馬會耆智園
Jockey Club Centre for Positive Ageing



捐助機構



香港賽馬會慈善信託基金

合辦機構



Ms. Imelda Chan, Head of Charities (Positive Ageing & Elderly Care; and Healthy Community), The Hong Kong Jockey Club said, “Healthy Community’ and ‘Positive Ageing and Elderly Care’ are two of the priority areas of The Hong Kong Jockey Club Charities Trust’s strategy. The Club has been committed to enhancing dementia support services. As early as in year 2000, the Club initiated and funded the establishment of the Jockey Club Centre for Positive Ageing to promote community-based dementia support services. This latest donation of over HK\$170 million for Jockey Club ‘Brain Health’ Dementia Screening and Community Support Project is the largest dementia project funded by the Club in recent years. The project will train over 100 private doctors and staff from various social service organizations to provide dementia diagnosis and follow-up for 2,400 patients at the primary healthcare level. We hope that the experiences and data derived from this project will help build primary health services for dementia in Hong Kong, bringing together efforts from all sectors to support more individuals with dementia and their caregivers.”

Thirty percent of participants need further cognitive follow up

Research has found that if individuals with mild cognitive impairment do not receive any intervention within a year, 10 to 15% of cases will develop into early-stage dementia¹. The “EC Screen” APP, being developed by the Faculty of Medicine of The Chinese University of Hong Kong, provides a preliminary assessment of dementia in just 15 minutes.

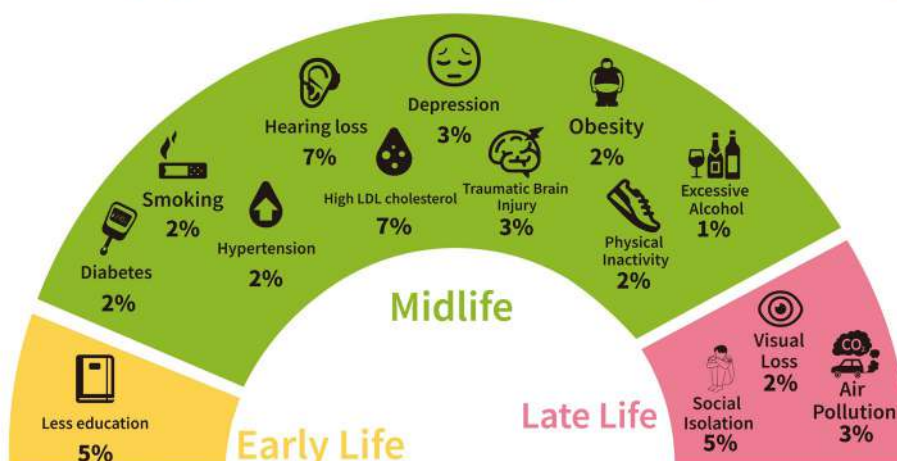
From 1 December 2023 till now, 6,339 Hong Kong residents have taken the ‘EC Screen APP’. Research findings indicate that 30.4% of participants require further cognitive follow-up. It was also found that the odds of passing the test will reduce by 10% per one-year age increase. The findings also revealed that among participants aged 60 or above, 46.4% of those with primary education or below showed “needs attention”, compared to 24.4% of those with secondary education, and only 13.8% of those with tertiary education or above. This reflects that low educational attainment is also a risk factor for dementia. Moreover, 89.9% of participants who showed “needs attention” expressed interest in joining Jockey Club “Brain Health” Dementia Screening and Community Support Project.

Prof. Timothy Kwok, Director of JCCPA and S.H. Ho Professor of Geriatric Medicine of Department of Medicine and Therapeutics, The Chinese University of Hong Kong said, “We sincerely thank The Hong Kong Jockey Club Charities Trust for their donation and the seven co-organizers for their support of the project. The Jockey Club Centre for Positive Ageing has always been committed to providing support at various levels and stages for individuals with dementia and their caregivers. The Jockey Club ‘Brain Health’ Dementia Screening and Community Support Project aims to support individuals suspected of having mild cognitive impairment, those in the early stages of dementia, and their family caregivers, helping them develop appropriate care plans. The research findings of the ‘EC Screen APP’ have shown that certain people in Hong Kong are at potential risk of developing dementia. However, ‘early detection, early diagnosis and early intervention’ are crucial and timely actions to prevent dementia or delay the decline.”

Eliminate 14 risk factors to prevent dementia

In July of this year, a report published by one of the world's highest-impact academic journals, The Lancet, indicated that by 2050, the worldwide population with dementia is expected to nearly double from 2019 to reach 153 million. Dementia has become one of the most concerning public health issues around the world. By eliminating 14 risk factors for dementia including hearing loss and high cholesterol, 45% of dementia cases could potentially be prevented or delayed.

Your chance of developing dementia can be reduced by eliminating the following risk factors:



¹ Source from: Alzheimer Society of Canada

Building primary care for dementia

The Jockey Club “Brain Health” Dementia Screening and Community Support Project introduces a pilot primary healthcare model in Hong Kong. The project aims for “early detection, early diagnosis and early intervention,” aligning with the government’s policy of fostering medical-social collaboration. Through public education, it seeks to enhance public awareness of brain health and improve understanding of cognitive health and dementia among citizens.

The project encourages individuals suspected of having dementia to receive preliminary assessment using the “EC Screen” app. Those requiring follow-up will be referred to partner organizations for detailed assessment. If necessary, they will be further referred to primary care doctors for diagnosis and follow-up. Partner organizations will also provide post-diagnostic psychosocial support for diagnosed individuals and their caregivers. The project also offers early diagnosis and support services for those waiting for specialist outpatient services at public hospitals due to suspected dementia. By seizing the golden period for intervention, it can significantly slow the progression of dementia, giving individuals with mild cognitive impairment or early dementia and their families more time to plan their lives and care arrangements. Additionally, the project will train over 100 private doctors and staff from various social service organizations, ensuring the service users receive more professional assistance and support, benefiting more Hong Kong citizens.



Prof. Timothy Kwok, Director of JCCPA and S.H. Ho Professor of Geriatric Medicine of Department of Medicine and Therapeutics, The Chinese University of Hong Kong to announce “EC Screen” APP data analysis result.

From left to right:
Dr. Kenny Chui, Deputy General Manager, Jockey Club Centre for Positive Ageing, Dr. Li Shun-Cheong (GP), Prof. Timothy Kwok, Director of JCCPA and S.H. Ho Professor of Geriatric Medicine of Department of Medicine and Therapeutics, The Chinese University of Hong Kong, Ms. Imelda Chan, Head of Charities (Positive Ageing & Elderly Care; and Healthy Community), The Hong Kong Jockey Club, Mr. Fung, Ms. Fung and Ms. Winnie Chung, Case Manager of St. James’ Settlement to take the group photo after sharing.



From left to right:
 Professor Timothy Kwok, Director of JCCPA and S.H. Ho Professor of Geriatric Medicine of Department of Medicine and Therapeutics, Ms. Imelda Chan, Head of Charities (Positive Ageing & Elderly Care; and Healthy Community), The Hong Kong Jockey Club, Mr. Chris Sun, JP, Secretary for Labour and Welfare; Dr. the Honourable Lam Ching-choi, SBS, JP, Chairman of the Advisory Committee on Mental Health; Mr. Eddie Lee, JP, Deputy Secretary for Health; Dr. Maria Tang, Deputising Hospital Chief Executive, Shatin Hospital, Hospital Authority attended the launch ceremony of the Jockey Club “Brain Health” Dementia Screening and Community Support Project held at New Town Plaza in Sha Tin today (15 September).

Professor Timothy Kwok, Director of JCCPA and S.H. Ho Professor of Geriatric Medicine of Department of Medicine and Therapeutics, Ms. Imelda Chan, Head of Charities (Positive Ageing & Elderly Care; and Healthy Community), The Hong Kong Jockey Club, Mr. Chris Sun, JP, Secretary for Labour and Welfare; Dr. the Honourable Lam Ching-choi, SBS, JP, Chairman of the Advisory Committee on Mental Health; Mr. Eddie Lee, JP, Deputy Secretary for Health; Dr. Maria Tang, Deputising Hospital Chief Executive, Shatin Hospital, Hospital Authority, representatives from partner and supporting organizations, and some of the participating in the project private doctors attended the launch ceremony of the Jockey Club “Brain Health” Dementia Screening and Community Support Project held at New Town Plaza in Sha Tin today (15 September).

“Brain Health” Promotion Truck travelling across Hong Kong

To raise awareness among the public about their cognitive abilities, the Jockey Club Centre for Positive Ageing, along with seven partner organizations, has arranged for the “Brain Health” Promotion Truck to travel across various districts in Hong Kong, Kowloon, and the New Territories from 1 to 30 September. In addition to informing more individuals about the Jockey Club “Brain Health” Dementia Screening and Community Support Project, our professional staff will also conduct on-site preliminary screenings assessment using the “EC Screen” app for individuals suspected of having dementia on the promotion truck. For more details, please visit <https://rb.gy/q4gzch>.

“Brain Health” Promotion Truck Parking Spots * :

Date	District	Parking Spots	Organisation	Enquiry and Appointment
1 September (SUN)	Tai Po	55 Kwong Fuk Road, Tai Po	Jockey Club Centre for Positive Ageing	2946-8180 / 6120-9629
2 September (MON)	Sheung Wan	Bonham Strand, Sheung Wan (next to Municipal Services Building)	St. James' Settlement	2816-9020 / 4664-9799
3 September (TUE)	Chai Wan	Yee Tai Street, Chai Wan (Outside Cinema)	Tung Wah Group of Hospitals	2481-1566
4 September (WED)	Sham Shui Po	Fuk Wah Street, Sham Shui Po (next to Golden Shopping Mall Building)	The Lok Sin Tong Benevolent Society, Kowloon	2185-7722
5 September (THU)	Kowloon Bay	Jordan Valley North Road, Kowloon Bay	Christian Family Service Centre	2793-2138 / 2950-8388
6 September (FRI)	Lam Tin	On Tin Street (Kai Tin Shopping Arcade), Lam Tin	Haven of Hope Christian Service	2701-0602 / 9146-2693
7 September (SAT)	Yuen Long	Fung Yau Street North, Yuen Long (Sitting Out Area)	Pok Oi Hospital	3590-9006
8 September (SUN)	Tuen Mun	Tsing Hoi Circuit, Tuen Mun	Yan Chai Hospital Social Services Department	2614-8967
9 September (MON)	Tai Wai	Tsuen Nam Road, Tai Wai (Tai Wai Station Exit A)	Jockey Club Centre for Positive Ageing	2946-8180 / 6120-9629
10 September (TUE)	Sai Wan	540 Queen's Road West, Sai Wan	St. James' Settlement	2816-9020 / 4664-9799
11 September (WED)	Tung Chung	Yat Tung Street, Tung Chung (Kan Yat House)	Tung Wah Group of Hospitals	2481-1566
12 September (THU)	Kwai Fong	Kwai Fu Road, Kwai Chung (beside Kwai Chung Plaza)	Yan Chai Hospital Social Services Department	2614-8967
13 September (FRI)	Wong Tai Sin	Tai Shing Street, Wong Tai Sin (next to the wet market)	Christian Family Service Centre	2793-2138 / 2950-8388
14 September (SAT)	Tsim Sha Tsui	Haiphong Road, Tsim Sha Tsui (under bridge)	The Lok Sin Tong Benevolent Society, Kowloon	2185-7722
15 September (SUN)	Sha Tin	Hin Keng Estate, Sha Tin	Jockey Club Centre for Positive Ageing	2946-8180 / 6120-9629
16 September (MON)	Tin Shui Wai	Tin Shui Estate, Tin Shui Wai	Pok Oi Hospital	3590-9006
17 September (TUE)	Tuen Mun	1 Tuen Shun Street, Tuen Mun	Yan Chai Hospital Social Services Department	2614-8967
18 September (WED)	Prince Edward	Allied Plaza, Prince Edward (Prince Edward Exit B2)	The Lok Sin Tong Benevolent Society, Kowloon	2185-7722
19 September (THU)	Kwun Tong	Tin Fai House, Shun Tin Estate (opposite to vacant lot)	Haven of Hope Christian Service	2701-0602 / 9146-2693
20 September (FRI)	Aberdeen	Nam Ning Street, Aberdeen (next to Aberdeen Center)	Tung Wah Group of Hospitals	2481-1566

Date	District	Parking Spots	Organisation	Enquiry and Appointment
21 September (SAT)	Causeway Bay	Paterson Street (Donki), Causeway Bay	St. James' Settlement	2816-9020 / 4664-9799
22 September (SUN)	Yau Tong	Yau Tong Estate, Yau Tong	Haven of Hope Christian Service	2701-0602 / 9146-2693
23 September (MON)	Kwun Tong	Tsun Yip Street, Kwun Tong (COS Centre)	Christian Family Service Centre	2793-2138 / 2950-8388
24 September (TUE)	Tin Shui Wai	Yiu Man House, Tin Yiu Estate	Pok Oi Hospital	3590-9006
25 September (WED)	Sai Wan Ho	23 Tai On Street, Sai Wan Ho	Tung Wah Group of Hospitals	2481-1566
26 September (THU)	Wan Chai	Hennessy Road, Wan Chai (next to Wanchai Computer Centre)	St. James' Settlement	2816-9020 / 4664-9799
27 September (FRI)	Tseung Kwan O	King Lam Estate, Tseung Kwan O	Haven of Hope Christian Service	2701-0602 / 9146-2693
28 September (SAT)	Tsuen Wan	Shek Kwai House, Shek Wai Kok Estate	Yan Chai Hospital Social Services Department	2614-8967
29 September (SUN)	Mongkok	Sai Yeung Choi Street South, Mongkok (Broadway Cinema)	The Lok Sin Tong Benevolent Society, Kowloon	2185-7722
30 September (MON)	Sheung Shui	33 Lung Sum Road, Sheung Shui	Jockey Club Centre for Positive Ageing	2946-8180 / 6120-9629

** The routes and stop-off points of the promotion truck are subject to change based on actual conditions*

To pre-register for a free preliminary assessment, for those aged 60 or above, living in the community and are suspected of having mild cognitive impairment or early-stage dementia, please contact:

Jockey Club Centre for Positive Ageing
Contact: 2946-8180 / 6120-9629 (WhatsApp)

Jockey Club “Brain Health” Dementia Screening and Community Support Project

The project is a large-scale pilot programme funded by The Hong Kong Jockey Club Charities Trust and organized by the Jockey Club Centre for Positive Ageing and the Faculty of Medicine of The Chinese University of Hong Kong. It aims for “early detection, early diagnosis and early intervention”. Through medical-social collaboration between general practitioners and social welfare organizations (they are Christian Family Service Centre, Haven of Hope Christian Service, The Lok Sin Tong Benevolent Society, Kowloon, Pok Oi Hospital, St. James’ Settlement, Tung Wah Group of Hospitals and Yan Chai Hospital Social Services Department), it provides diagnostic and support services to individuals suspected of having dementia and their families between December 2023 and November 2026.

Project Website: <https://www.jccpa.org.hk/en/projects/dscs/>

Download “EC Screen APP” now and take a free 15-minute preliminary assessment:



URL: <https://apple.co/4cFGyS6>



URL: <https://bit.ly/3xpZlwh>

About Jockey Club Centre for Positive Ageing

The Jockey Club Centre for Positive Ageing is a non-profit integrated service centre for dementia inaugurated in 2000. The centre was established with donations from The Hong Kong Jockey Club Charities Trust and managed by The Chinese University of Hong Kong. It is committed to providing quality training to people with dementia to delay the decline in cognitive ability and encourage them to maintain normal social activities. It also helps to relieve stress among family members through supporting services and aids the further development of dementia care through training and research.

Website: www.jccpa.org.hk

Media Enquiry:

Jockey Club Centre for Positive Ageing
Michelle Cheung
Contact: (852) 2946-8104 / 5201-6459
Email: michelle.ym.cheung@jccpa.org.hk